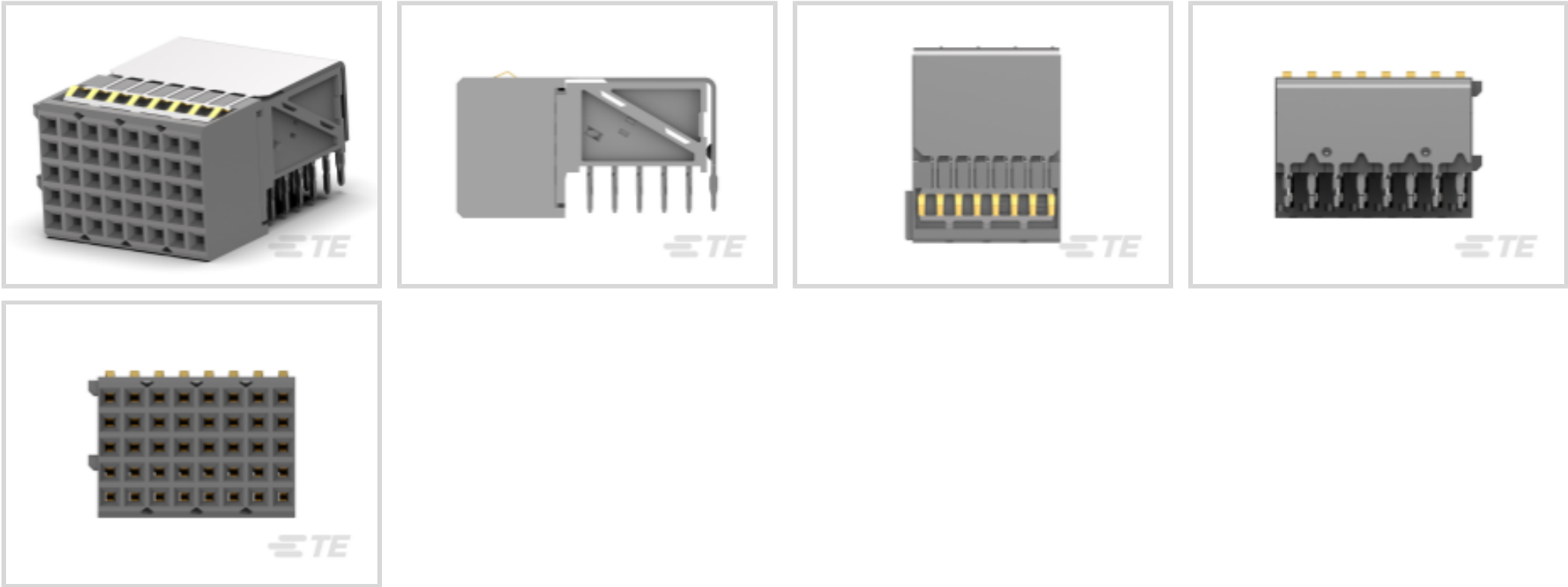




Connectors > PCB Connectors > Backplane Connectors > Hard Metric Connectors



PCB Connector Assembly Type: **PCB Mount Receptacle**

Data Rate: **1 Gb/s**

Number of Columns: **8**

Number of Rows: **5**

Backplane Architecture: **Backplane**

Features

Product Type Features

Ground Component Type	Ground Return Shielding
PCB Connector Assembly Type	PCB Mount Receptacle
Connector System	Board-to-Board
Sealable	No
Connector & Contact Terminates To	Printed Circuit Board

Configuration Features

Rows Loaded	A, B, C, D, E (All Positions)
Number of Columns	8
Number of Rows	5
Backplane Architecture	Backplane
Number of Positions	40
PCB Mount Orientation	Right Angle

Signal Characteristics

Crosstalk Version	Standard
Data Rate	1 Gb/s



Contact Features

Contact Type	Socket
Contact Base Material	Phosphor Bronze
CompactPCI Designation	None
Contact Mating Area Plating Material	Gold
Contact Current Rating (Max)	1.5 A

Mechanical Attachment

Mating Alignment Type	Polarization
Connector Mounting Type	Board Mount

Housing Features

Housing Material	Thermoplastic
Centerline (Pitch)	2 mm[.0787 in]
Housing Color	Natural

Usage Conditions

Operating Temperature Range	-55 – 125 °C[-65 – 257 °F]
-----------------------------	----------------------------

Operation/Application

Shielded	Yes
Circuit Application	Signal

Industry Standards

UL Flammability Rating	UL 94V-0
AdvancedTCA Specified Product	No

Packaging Features

Packaging Method	Tube
------------------	------

Product Compliance

For compliance documentation, visit the product page on TE.com>

EU RoHS Directive 2011/65/EU	Compliant
EU ELV Directive 2000/53/EC	Not Yet Reviewed
China RoHS 2 Directive MIIT Order No 32, 2016	No Restricted Materials Above Threshold
EU REACH Regulation (EC) No. 1907/2006	Current ECHA Candidate List: JUL 2019 (201) Not Yet Reviewed
EU REACH Regulation (EC) No. 1907/2006	



	Current ECHA Candidate List: JUL 2019 (201) Not Yet Reviewed
Halogen Content	Not Low Halogen - contains Br or Cl > 900 ppm.
Solder Process Capability	Not applicable for solder process capability

Product Compliance Disclaimer

This information is provided based on reasonable inquiry of our suppliers and represents our current actual knowledge based on the information they provided. This information is subject to change. The part numbers that TE has identified as EU RoHS compliant have a maximum concentration of 0.1% by weight in homogenous materials for lead, hexavalent chromium, mercury, PBB, PBDE, DBP, BBP, DEHP, DIBP, and 0.01% for cadmium, or qualify for an exemption to these limits as defined in the Annexes of Directive 2011/65/EU (RoHS2). Finished electrical and electronic equipment products will be CE marked as required by Directive 2011/65/EU. Components may not be CE marked. Additionally, the part numbers that TE has identified as EU ELV compliant have a maximum concentration of 0.1% by weight in homogenous materials for lead, hexavalent chromium, and mercury, and 0.01% for cadmium, or qualify for an exemption to these limits as defined in the Annexes of Directive 2000/53/EC (ELV). Regarding the REACH Regulations, TE’s information on SVHC in articles for this part number is still based on the European Chemical Agency (ECHA) ‘Guidance on requirements for substances in articles’(Version: 2, April 2011), applying the 0.1% weight on weight concentration threshold at the finished product level. TE is aware of the European Court of Justice ruling of September 10th, 2015 also known as O5A (Once An Article Always An Article) stating that, in case of ‘complex object’, the threshold for a SVHC must be applied to both the product as a whole and simultaneously to each of the articles forming part of its composition. TE has evaluated this ruling based on the new ECHA “Guidance on requirements for substances in articles” (June 2017, version 4.0) and will be updating its statements accordingly.

Compatible Parts

TE Model / Part # 2336514-1
2MM HM MALE
CONNECTOR, COL 8, M2

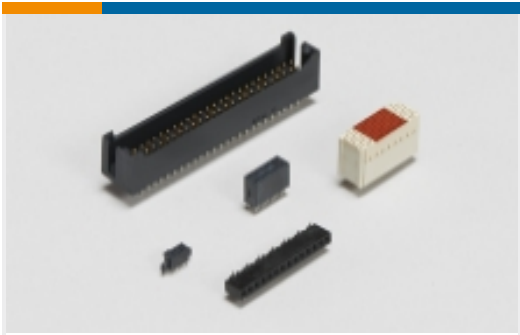
Also in the Series | Z-PACK 2mm HM

Backplane Coding Keys(60)

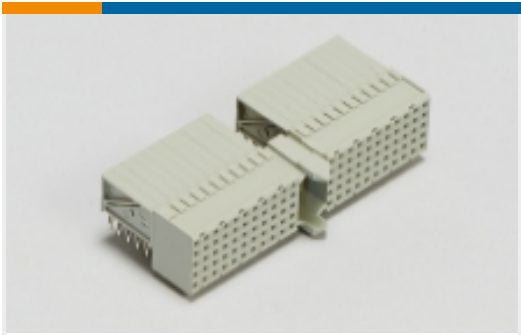
Backplane Connector Housings(2)

Backplane Guide Hardware (37)

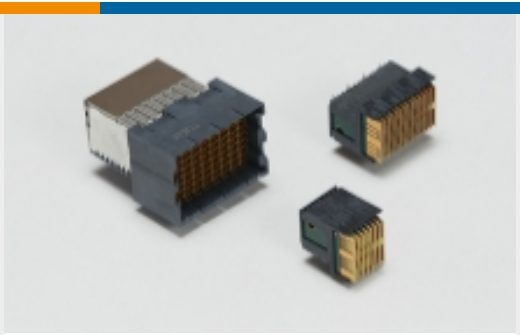
Board-to-Board Connector Contacts(7)



Board-to-Board Headers & Receptacles(6)



Hard Metric Backplane Connectors(254)



High Speed Backplane Connectors(9)



PCB Connector Covers(4)



PCB Connector Shrouds (42)



PCB Ferrules & Shields(19)



PCB Latches, Locks & Retainers(1)

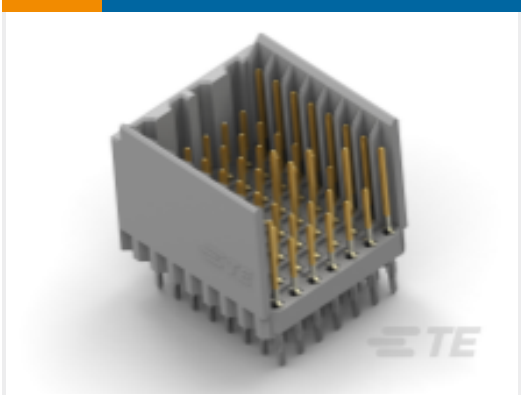


Rectangular Power Connectors(106)

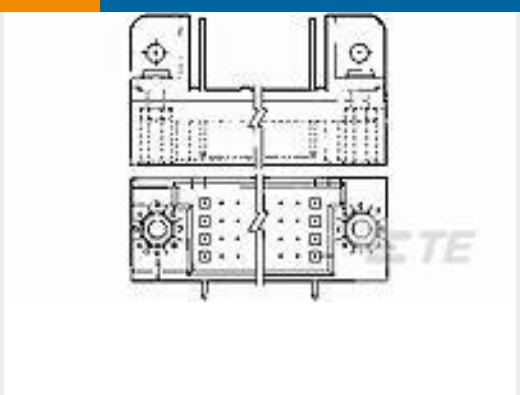
Customers Also Bought



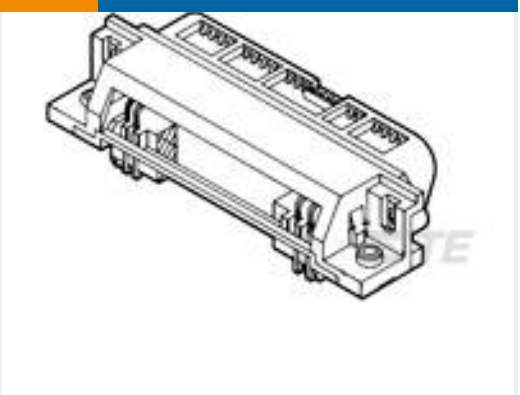
TE Model / Part #1926171-1
CONN,PIN,75Amp
MIDDLE DWR



TE Model / Part #2336514-1
2MM HM MALE
CONNECTOR, COL 8, M2



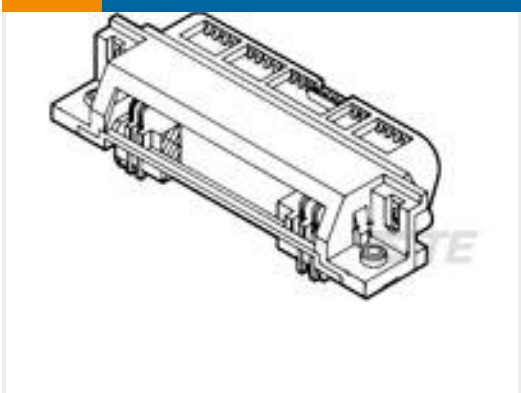
TE Model / Part #5533286-1
ASSY,PIN,RIGHT ANGLE,
HDI,LEAD-



TE Model / Part #5553121-2
ASSY, EMI RCPT, 24
POSN, RTANG



TE Model / Part #5-87577-4
14 MODII HDR DRRR
SHRD LF



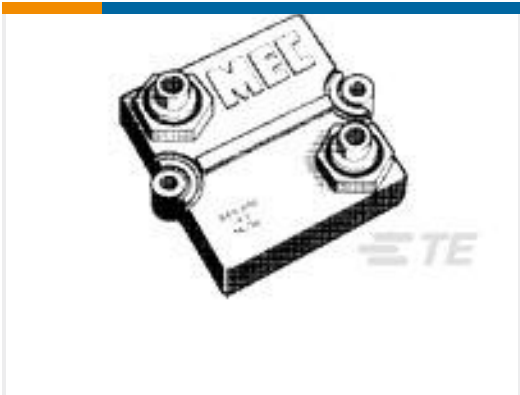
TE Model / Part #5553121-1
ASSY, EMI RCPT, 24
POSN, RTANG



TE Model / Part #3-1971817-3
3P,RAST 2.5 Tab Header,
Ex- Locking,THV



TE Model / Part #1614770-1
BDS 2 A 250 100K 10%



TE Model / Part #7-1614770-2
BDS 2A 250 500K 10%



TE Model / Part #1-2176366-4
RQ 0603 590R 0.1% 10PPM
1K RL

Documents



Product Drawings

2MM HM FEMALE ASSY, COL8

English

CAD Files

3D PDF

3D

Customer View Model

ENG_CVM_CVM_2336682-1_A.2d_dxf.zip

English

Customer View Model

ENG_CVM_CVM_2336682-1_A.3d_igs.zip

English

Customer View Model

ENG_CVM_CVM_2336682-1_A.3d_stp.zip

English

Product Specifications

Application Specification

English