



Product type designation			B500		
Contact characteristics					
Number of poles			nr.	3	
Rated insulation voltage Ui			V	1000	
Rated impulse withstand voltage Uimp			kV	8	
Operating frequency			Operational frequency min	Hz	25
			Operational frequency max	Hz	400
Conventional free air thermal current Ith			A	700	
Operating current			Operational current AC3 (≤440V ≤55°C)	A	520
			Operational current AC4 (400V)	A	175
Short-time allowable current for 10s (IEC/EN60947-1)			A	4050	
Protection fuse			gG (IEC)	A	800
			aM (IEC)	A	500
Making capacity (RMS value)			A	5000	
Breaking capacity at voltage			Breaking capacity 440V	A	5000
			Breaking capacity 500V	A	4500
			Breaking capacity 690V	A	4000
Resistance per pole (average value)			mΩ	0.14	
Power dissipation per pole (average value)			Power dissipation pole (average value) Ith	W	68.6
			AC3	W	35
Tightening torque for terminals			min	Nm	35
			max	Nm	35
			min	lbft	25.8
			max	lbft	25.8
Tightening torque for coil terminal			min	Nm	1
			max	Nm	1
			min	lbft	0.74
			max	lbft	0.74
Ambient conditions					
Temperature					
Operating temperature			min	°C	-50
			max	°C	70
Storage temperature			min	°C	-60
			max	°C	80
Max altitude			m	3,000	
Operating position					

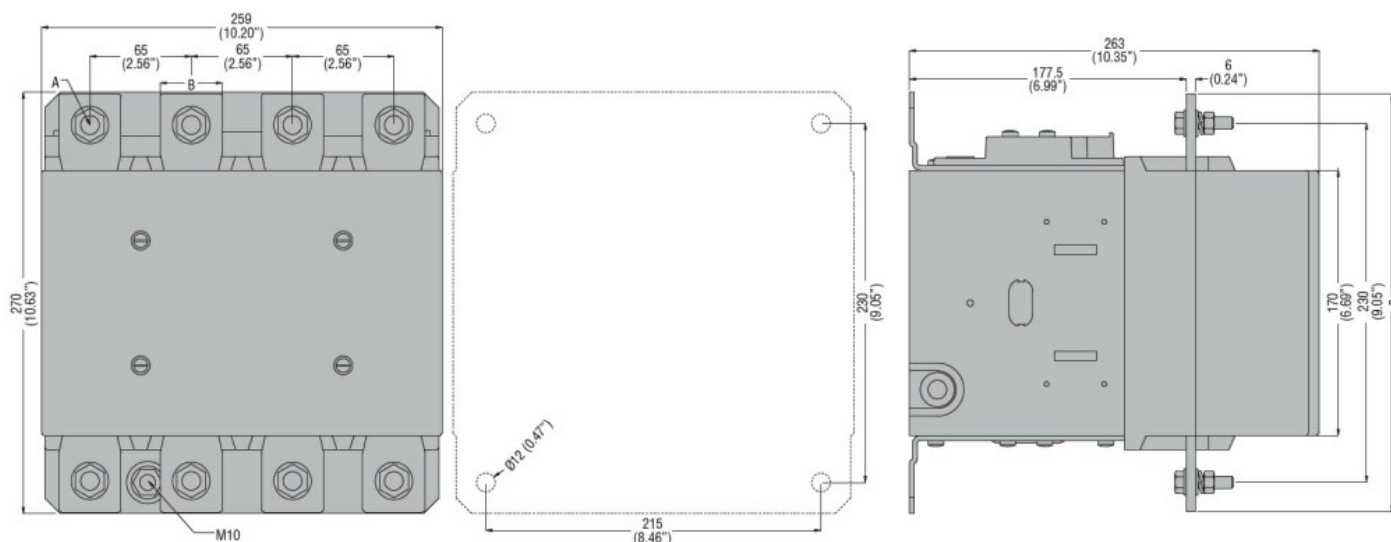
	normal allowable	Vertical plan ±30°
Mounting		Screw / DIN rail 35mm
Weight	g	18
<b>Operations</b>		
Mechanical life	Cycles	5,000,000
Electrical life	Cycles	700000
<b>Safety related data</b>		
Mirror contacts according to IEC/EN 60947-4-1		Yes
EMC compatibility		Yes
<b>AC coil operating</b>		
Rated AC voltage at 50/60Hz, 60Hz	min V max V	48 480

AC operating voltage	of 50/60Hz coil powered at 50Hz pick-up	min %Us max %Us	80 110
----------------------	--	--------------------	-----------

<b>DC coil operating</b>			
DC operating voltage			
Average coil consumption ≤20°C	in-rush W holding W	400 18	

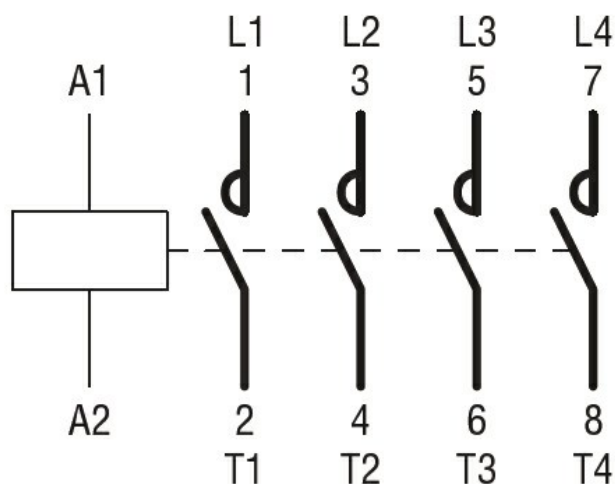
<b>Max cycles frequency</b>			
Mechanical operations	Cycles/h	3,600	

## Dimensions



CONTACTOR TYPE	A	B	C
B500	M10	35 (1.38")	265 (10.43")
B630	M12	40 (1.57")	270 (10.63")

## Wiring diagrams



### Certifications and compliance

#### Certifications

CSA C22.2 n° 60947-1

CSA C22.2 n° 60947-4-1

IEC/EN 60947-1

IEC/EN 60947-4-1

UL 60947-1

UL 60947-4-1

#### Compliance

CCC

cULus

EAC

### ETIM 6 classification

EC000066 - Power contactor, AC switching