

# Rittal – The System.

Faster – better – everywhere.

## Top-mounting module for VX – VX 8618.520

Date : Jun 14, 2019

ENCLOSURES

POWER DISTRIBUTION

CLIMATE CONTROL

IT INFRASTRUCTURE

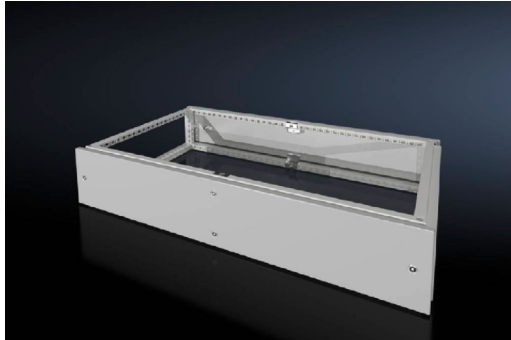
SOFTWARE & SERVICES

FRIEDHELM LOH GROUP



# Top-mounting module for VX – VX 8618.520

created: 14.06.2019 on [www.rittal.com/com-en](http://www.rittal.com/com-en)



## Product description

<b>Description:</b>	As a cable chamber for cable infeed from above or for power distribution with busbar systems across bayed enclosures. The cover plate supplied as standard is used to finish off at the top.
<b>Material:</b>	Sheet steel, 1.5 mm
<b>Surface finish:</b>	Spray-finished, textured paint
<b>Colour:</b>	RAL 7035
<b>Protection category IP to IEC 60 529:</b>	IP 55
<b>Protection category NEMA:</b>	NEMA 12
<b>Supply includes:</b>	Frame module 2 trim panels front/rear 8 retainers with automatic potential equalisation Assembly parts

## Product features

<b>To fit:</b>	Width: = 1000 mm Depth: = 600 mm
<b>Dimensions:</b>	Height: 200 mm
<b>Packs of:</b>	1 pc(s).
<b>Weight/pack:</b>	16.2 kg

<b>Copper weight (kg per piece):</b>	0
<b>EAN:</b>	4028177921191
<b>Customs tariff number:</b>	94039010
<b>ETIM 6.0:</b>	EC000744
<b>ETIM 5.0:</b>	EC000744
<b>eCl@ss 8.0/8.1:</b>	27182405
<b>eCl@ss 7.0/7.1:</b>	27182405
<b>eCl@ss 6.0/6.1:</b>	27182405
<b>eCl@ss 5.1/5.1.4:</b>	27182402
<b>Product description:</b>	VX Top mounting module, for WD: 1000x600 mm
<b>Approvals</b>	
<b>Approvals:</b>	UL + C-UL