

# Rittal – The System.

Faster – better – everywhere.

## Section for cable entry, rear for VX – VX 8618.812

Date : Jun 14, 2019

ENCLOSURES

POWER DISTRIBUTION

CLIMATE CONTROL

IT INFRASTRUCTURE

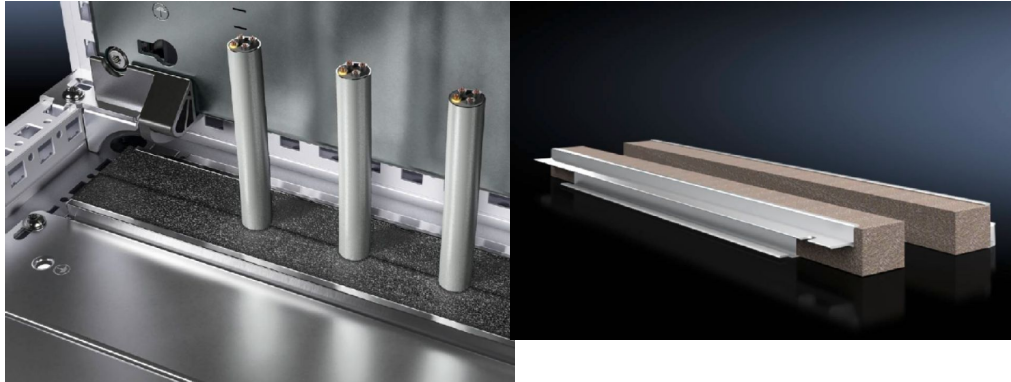
SOFTWARE & SERVICES

FRIEDHELM LOH GROUP



# Section for cable entry, rear for VX – VX 8618.812

created: 14.06.2019 on [www.rittal.com/com-en](http://www.rittal.com/com-en)



## Product description

<b>Benefits:</b>	Simple assembly Full-surface support High level of sealing of cables inserted into the enclosure
<b>Applications:</b>	For top-mounting on gland plates.
<b>Material:</b>	Extruded aluminium section Seal: PU foam Cross-section: 30 x 25 mm
<b>Protection category IP to IEC 60 529:</b>	IP 55 if installed correctly
<b>Supply includes:</b>	Plug-in sections, incl. foam rubber clamp strip
<b>Note:</b>	You will need two pieces per cable entry point. From an enclosure width of 1000 mm, the base assembly is divided into two sections in the width. Two cable entry points (left/right) may be used.

## Product features

<b>To fit:</b>	Width: = 1000 mm
<b>Packs of:</b>	4 pc(s).
<b>Weight/pack:</b>	0.36 kg
<b>Copper weight (kg per piece):</b>	0
<b>EAN:</b>	4028177922815

<b>Customs tariff number:</b>	76042990
<b>ETIM 6.0:</b>	EC002624
<b>ETIM 5.0:</b>	EC002624
<b>eCl@ss 8.0/8.1:</b>	27189265
<b>eCl@ss 7.0/7.1:</b>	27400604
<b>eCl@ss 6.0/6.1:</b>	27400604
<b>eCl@ss 5.1/5.1.4:</b>	27189222
<b>Product description:</b>	VX Section for cable entry, rear, for W: 1000 mm