

Rittal – The System.

Faster – better – everywhere.

Cable duct – VX 8800.755

Date : Jun 18, 2019

ENCLOSURES

POWER DISTRIBUTION

CLIMATE CONTROL

IT INFRASTRUCTURE

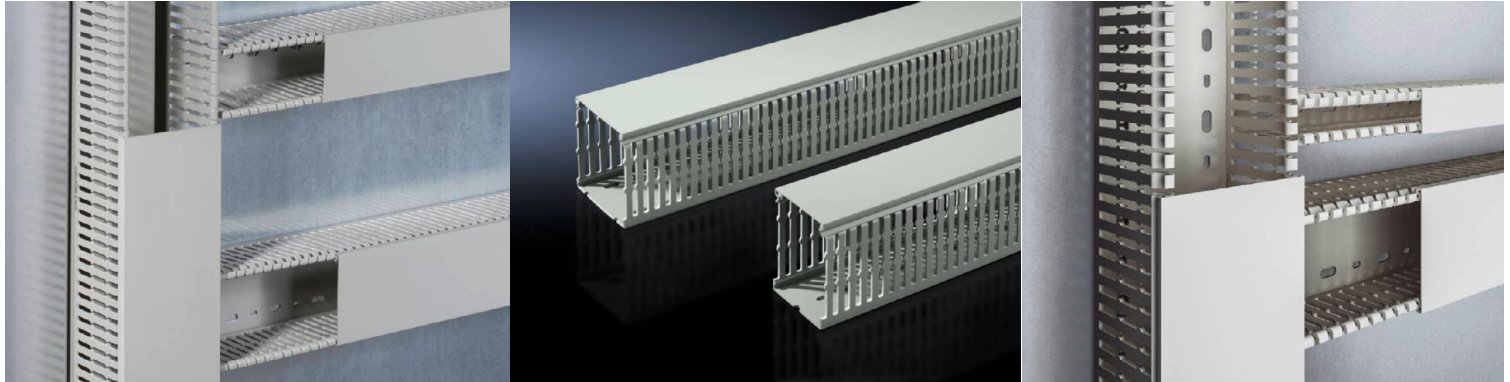
SOFTWARE & SERVICES

FRIEDHELM LOH GROUP



Cable duct – VX 8800.755

created: 18.06.2019 on www.rittal.com/com-en



Product description

Design:	for mounting plates
Description:	With special DIN punchings for direct mounting on the enclosure section or on surfaces such as mounting plates.
Material:	Hard PVC Flame-resistant, self-extinguishing Temperature resistant to +60 °C
Colour:	Similar to RAL 7030
Supply includes:	Cable duct with cover
Note:	Can be shortened for other dimensions.

Product features

Dimensions:	Width: 50 mm Depth: 80 mm Length: 2000 mm
Installation options:	With special DIN punchings for direct mounting on the enclosure section or on surfaces such as mounting plates If the mounting plate is installed flush with the enclosure frame at the rear (installation position ± 0 mm), the horizontally mounted cable ducts are aligned with the cable ducts mounted on the enclosure section. Cable duct 50 mm wide for individually sited VX25 enclosures with side panel on the vertical section, on the left and right adjacent to the mounting plate. Cable duct 100 mm for mounting on the vertical enclosure frame with bayed enclosures. For external mounting on surfaces.

Bar width:	5.5 mm
Slot width:	4.5 mm
Operating temperature:	Operation (environment): 60 °C
Packs of:	18 pc(s).
Weight/pack:	19.4 kg
Copper weight (kg per piece):	0
EAN:	4028177919648
Customs tariff number:	39259020
ETIM 6.0:	EC000012
ETIM 5.0:	EC000012
eCl@ss 8.0/8.1:	27400703
eCl@ss 7.0/7.1:	27400703
eCl@ss 6.0/6.1:	27400703
eCl@ss 5.1/5.1.4:	27189224
Product description:	VX Cable duct, for mounting plate and section, WD: 50x80 mm, L: 2000 mm
Approvals	
Certificates:	EAC