

Rittal – The System.

Faster – better – everywhere.

Base/plinth trim panels with brush strip for base/plinth system VX – VX 8620.093

Date : Jun 18, 2019

ENCLOSURES

POWER DISTRIBUTION

CLIMATE CONTROL

IT INFRASTRUCTURE

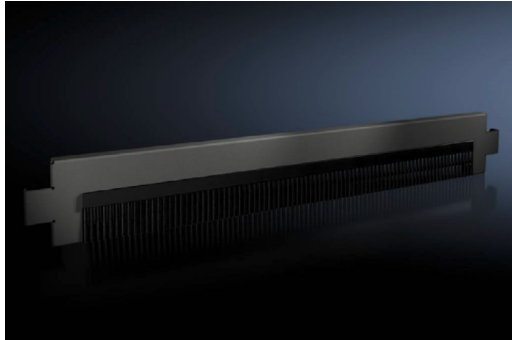
SOFTWARE & SERVICES

FRIEDHELM LOH GROUP



Base/plinth trim panels with brush strip for base/plinth system VX – VX 8620.093

created: 18.06.2019 on www.rittal.com/com-en



Product description

Description:	For cable entry in the base/plinth. With a base/plinth height of 200 mm, one or two trim panels with brush strips may optionally be used. Thanks to the complete symmetry of the base/plinth system VX, the trim panels with brush strip may either be fitted at the front, rear or side on the base/plinth corner piece.
Material:	Base/plinth trims: Sheet steel Brush strip: Plastic, self-extinguishing
Colour:	RAL 9005
Supply includes:	Assembly parts

Product features

To fit:	Width/depth: 800 mm
Dimensions:	Height: 100 mm
Packs of:	2 pc(s).
Weight/pack:	1.76 kg
Copper weight (kg per piece):	0
EAN:	4028177922464
Customs tariff	94039010

number:	
ETIM 6.0:	EC000721
ETIM 5.0:	EC000721
eCl@ss 8.0/8.1:	27182003
eCl@ss 7.0/7.1:	27189270
eCl@ss 6.0/6.1:	27189270
eCl@ss 5.1/5.1.4:	27182092
Product description:	VX Base/plinth trim panel, with brush strip, for W/D: 800 mm
Approvals	
Approvals:	UL + C-UL