

Rittal – The System.

Faster – better – everywhere.

Base/plinth trim panels, side, 100 mm, stainless steel for base/plinth system VX – VX 8620.071

Date : Jun 18, 2019

ENCLOSURES

POWER DISTRIBUTION

CLIMATE CONTROL

IT INFRASTRUCTURE

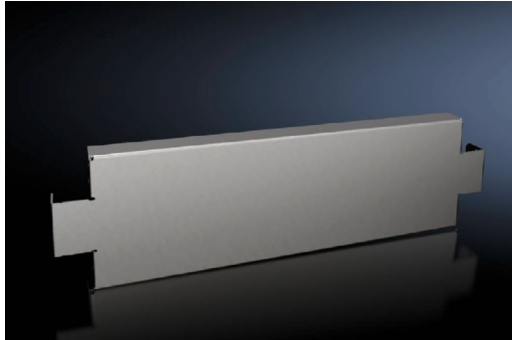
SOFTWARE & SERVICES

FRIEDHELM LOH GROUP



Base/plinth trim panels, side, 100 mm, stainless steel for base/plinth system VX – VX 8620.071

created: 18.06.2019 on www.rittal.com/com-en



Product description

Description:	To finish off a base/plinth unit at the sides and for additional stabilisation or for the interior configuration of bayed base/plinths. One 200 mm high or two 100 mm high trim panels may optionally be fitted on 200 mm high base/plinths.
---------------------	--

Material:	Stainless steel 1.4301 (AISI 304)
------------------	-----------------------------------

Surface finish:	Brushed, grain 400
------------------------	--------------------

Supply includes:	Assembly parts
-------------------------	----------------

Product features

To fit:	Depth: = 500 mm
----------------	-----------------

Dimensions:	Height: 100 mm
--------------------	----------------

Packs of:	2 pc(s).
------------------	----------

Weight/pack:	2.2 kg
---------------------	--------

Copper weight (kg per piece):	0
--------------------------------------	---

EAN:	4028177922389
-------------	---------------

Customs tariff number:	94039010
-------------------------------	----------

ETIM 6.0:	EC000721
ETIM 5.0:	EC000721
eCl@ss 8.0/8.1:	27182003
eCl@ss 7.0/7.1:	27189270
eCl@ss 6.0/6.1:	27189270
eCl@ss 5.1/5.1.4:	27182092
Product description:	VX Base/plinth trim panel, side, H: 100 mm, for D: 500 mm, stainless steel, 1.4301
Approvals	
Approvals:	UL + C-UL
Certificates:	EAC