

Rittal – The System.

Faster – better – everywhere.

Base/plinth corner pieces with base/plinth trim panels, front and rear, 200 mm, stainless steel – VX 8620.063

Date : Jun 18, 2019

ENCLOSURES

POWER DISTRIBUTION

CLIMATE CONTROL

IT INFRASTRUCTURE

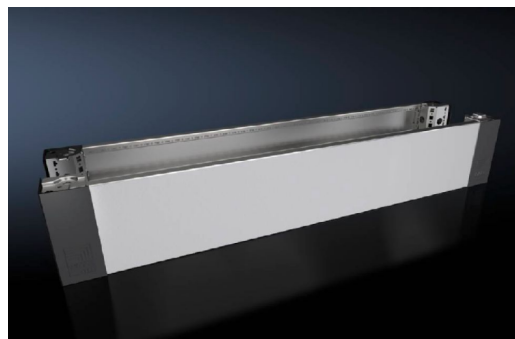
SOFTWARE & SERVICES

FRIEDHELM LOH GROUP



Base/plinth corner pieces with base/plinth trim panels, front and rear, 200 mm, stainless steel – VX 8620.063

created: 18.06.2019 on www.rittal.com/com-en



Product description

Description: High-load capacity base/plinth corner pieces with moulded self-positioning to the baying enclosure system, may be used with or without trim panels depending on the application. Large openings in the corner piece for optimum access to the screw-fastening point, may be concealed with corner and baying cover.

Material: Base/plinth corner piece: Stainless steel 1.4301 (AISI 304)
Base/plinth trim panel front/rear: Stainless steel 1.4301 (AISI 304)
Corner and baying cover: Plastic

Surface finish: Brushed, grain 400

Supply includes: 4 base/plinth corner pieces
4 corner covers
1 baying cover
1 base/plinth trim panel, front/rear, 200 mm high
2 base/plinth trim panels, front/rear, 100 mm high
Assembly parts

Note: Base/plinth trim panels, sides to finish off a unit, for additional stabilisation between base/plinths, or for interior configuration

Product features

To fit: Width: = 1200 mm

Dimensions: Height: 200 mm

Packs of: 2 pc(s).

Weight/pack:	15.2 kg
Copper weight (kg per piece):	0
EAN:	4028177922365
Customs tariff number:	94039010
ETIM 6.0:	EC000721
ETIM 5.0:	EC000721
eCl@ss 8.0/8.1:	27182003
eCl@ss 7.0/7.1:	27182003
eCl@ss 6.0/6.1:	27182003
eCl@ss 5.1/5.1.4:	27182092
Product description:	VX Base/plinth corner piece, with base/plinth trim panel, front and rear, H: 200 mm, for W: 1200 mm, stainless steel, 1.4301
Approvals	
Approvals:	UL + C-UL