

Rittal – The System.

Faster – better – everywhere.

Base/plinth corner pieces with base/plinth trim panels, front and rear, 200 mm, stainless steel – VX 8620.062

Date : Jun 19, 2019

ENCLOSURES

POWER DISTRIBUTION

CLIMATE CONTROL

IT INFRASTRUCTURE

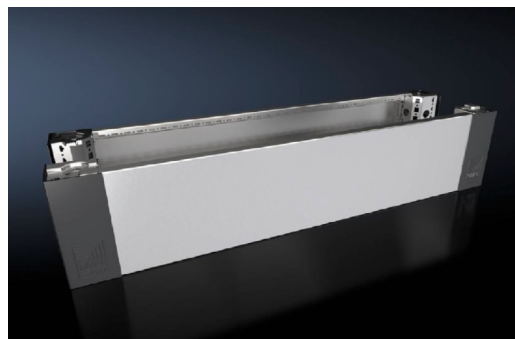
SOFTWARE & SERVICES

FRIEDHELM LOH GROUP



Base/plinth corner pieces with base/plinth trim panels, front and rear, 200 mm, stainless steel – VX 8620.062

created: 19.06.2019 on www.rittal.com/com-en



Product description

Description:	High-load capacity base/plinth corner pieces with moulded self-positioning to the baying enclosure system, may be used with or without trim panels depending on the application. Large openings in the corner piece for optimum access to the screw-fastening point, may be concealed with corner and baying cover.
Material:	Base/plinth corner piece: Stainless steel 1.4301 (AISI 304) Base/plinth trim panel front/rear: Stainless steel 1.4301 (AISI 304) Corner and baying cover: Plastic
Surface finish:	Brushed, grain 400
Supply includes:	4 base/plinth corner pieces 4 corner covers 1 baying cover 1 base/plinth trim panel, front/rear, 200 mm high 2 base/plinth trim panels, front/rear, 100 mm high Assembly parts
Note:	Base/plinth trim panels, sides to finish off a unit, for additional stabilisation between base/plinths, or for interior configuration

Product features

To fit:	Width: = 1000 mm
Dimensions:	Height: 200 mm
Packs of:	2 pc(s).

Weight/pack:	12.7 kg
Copper weight (kg per piece):	0
EAN:	4028177922358
Customs tariff number:	94039010
ETIM 6.0:	EC000721
ETIM 5.0:	EC000721
eCl@ss 8.0/8.1:	27182003
eCl@ss 7.0/7.1:	27182003
eCl@ss 6.0/6.1:	27182003
eCl@ss 5.1/5.1.4:	27182092
Product description:	VX Base/plinth corner piece, with base/plinth trim panel, front and rear, H: 200 mm, for W: 1000 mm, stainless steel, 1.4301
Approvals	
Approvals:	UL + C-UL