

# Rittal – The System.

Faster – better – everywhere.

## **Base/plinth corner pieces with base/plinth trim panels, front and rear, 200 mm, stainless steel – VX 8620.061**

Date : Jun 19, 2019

ENCLOSURES

POWER DISTRIBUTION

CLIMATE CONTROL

IT INFRASTRUCTURE

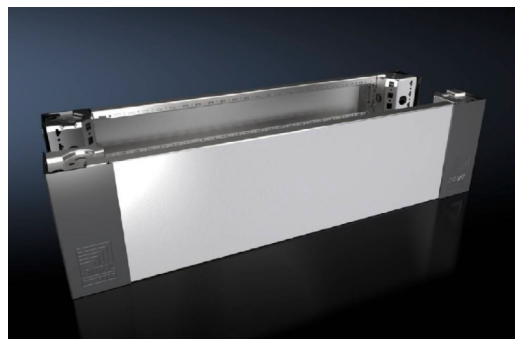
SOFTWARE & SERVICES

FRIEDHELM LOH GROUP



# Base/plinth corner pieces with base/plinth trim panels, front and rear, 200 mm, stainless steel – VX 8620.061

created: 19.06.2019 on [www.rittal.com/com-en](http://www.rittal.com/com-en)



## Product description

<b>Description:</b>	High-load capacity base/plinth corner pieces with moulded self-positioning to the baying enclosure system, may be used with or without trim panels depending on the application. Large openings in the corner piece for optimum access to the screw-fastening point, may be concealed with corner and baying cover.
<b>Material:</b>	Base/plinth corner piece: Stainless steel 1.4301 (AISI 304) Base/plinth trim panel front/rear: Stainless steel 1.4301 (AISI 304) Corner and baying cover: Plastic
<b>Surface finish:</b>	Brushed, grain 400
<b>Supply includes:</b>	4 base/plinth corner pieces 4 corner covers 1 baying cover 1 base/plinth trim panel, front/rear, 200 mm high 2 base/plinth trim panels, front/rear, 100 mm high Assembly parts
<b>Note:</b>	Base/plinth trim panels, sides to finish off a unit, for additional stabilisation between base/plinths, or for interior configuration

## Product features

<b>To fit:</b>	Width: = 800 mm
<b>Dimensions:</b>	Height: 200 mm
<b>Packs of:</b>	2 pc(s).

<b>Weight/pack:</b>	10.6 kg
<b>Copper weight (kg per piece):</b>	0
<b>EAN:</b>	4028177922341
<b>Customs tariff number:</b>	94039010
<b>ETIM 6.0:</b>	EC000721
<b>ETIM 5.0:</b>	EC000721
<b>eCl@ss 8.0/8.1:</b>	27182003
<b>eCl@ss 7.0/7.1:</b>	27182003
<b>eCl@ss 6.0/6.1:</b>	27182003
<b>eCl@ss 5.1/5.1.4:</b>	27182092
<b>Product description:</b>	VX Base/plinth corner piece, with base/plinth trim panel, front and rear, H: 200 mm, for W: 800 mm, stainless steel, 1.4301
<b>Approvals</b>	
<b>Approvals:</b>	UL + C-UL