

Rittal – The System.

Faster – better – everywhere.

► **Base/plinth corner
piece with base/plinth
trim panels, front and
rear, 100 mm for VX,
TS, TS IT, SE, CM, TP,
PC, IW, TE – VX
8620.008**

Date : Jun 18, 2019

ENCLOSURES

POWER DISTRIBUTION

CLIMATE CONTROL

IT INFRASTRUCTURE

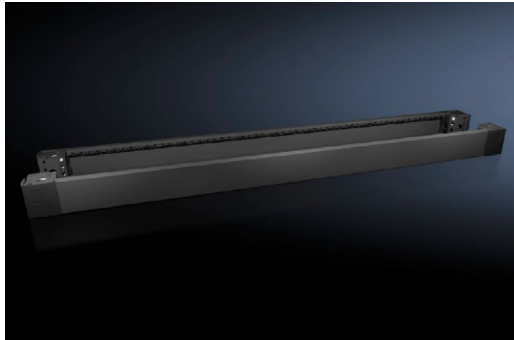
SOFTWARE & SERVICES

FRIEDHELM LOH GROUP



Base/plinth corner piece with base/plinth trim panels, front and rear, 100 mm for VX, TS, TS IT, SE, CM, TP, PC, IW, TE – VX 8620.008

created: 18.06.2019 on www.rittal.com/com-en



Product description

Description:	High-load capacity base/plinth corner pieces with moulded self-positioning to the baying enclosure system, may be used with or without trim panels depending on the application. Large openings in the corner piece for optimum access to the screw-fastening point, may be concealed with a corner and baying cover.
Material:	Base/plinth corner piece: Sheet steel Base/plinth trim panel front/rear: Sheet steel Corner and baying cover: Plastic
Colour:	RAL 9005
Supply includes:	4 base/plinth corner pieces, 100 mm high 4 corner covers 1 baying cover 2 base/plinth trim panels, front/rear, 100 mm high Assembly parts
Note:	Base/plinth trim panels, sides to finish off a unit, for additional stabilisation between base/plinths, or for interior configuration

Product features

To fit:	Enclosure type: VX Width: = 1600 mm
Dimensions:	Height: 100 mm
Packs of:	2 pc(s).

Weight/pack:	7.32 kg
Copper weight (kg per piece):	0
EAN:	4028177922075
Customs tariff number:	94039010
ETIM 6.0:	EC000721
ETIM 5.0:	EC000721
eCl@ss 8.0/8.1:	27182003
eCl@ss 7.0/7.1:	27182003
eCl@ss 6.0/6.1:	27182003
eCl@ss 5.1/5.1.4:	27182092
Product description:	VX Base/plinth corner piece, with base/plinth trim panel, front and rear, H: 100 mm, for W: 1600 mm, sheet steel
Approvals	
Approvals:	UL + C-UL
Certificates:	EAC