

Rittal – The System.

Faster – better – everywhere.

Punched section with mounting flange, 14 x 39 mm for tubular door frame VX, TS, SE, AX – VX 8619.720

Date : Jun 17, 2019

ENCLOSURES

POWER DISTRIBUTION

CLIMATE CONTROL

IT INFRASTRUCTURE

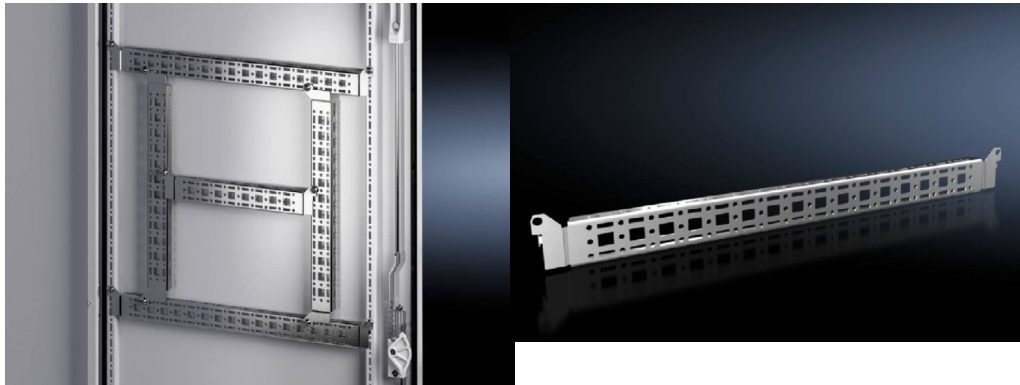
SOFTWARE & SERVICES

FRIEDHELM LOH GROUP



Punched section with mounting flange, 14 x 39 mm for tubular door frame VX, TS, SE, AX – VX 8619.720

created: 17.06.2019 on www.rittal.com/com-en



Product description	
Description:	For attaching cable ducts, cable conduit holders, equipment installed on the door, etc.
Material:	Sheet steel
Surface finish:	Zinc-plated
Supply includes:	Assembly parts
Note:	For installing your own components on the punched section with mounting flange, metal screws or self-tapping M5 screws are required
Product features	
To fit:	Enclosure type: VX Enclosure type: TS Enclosure type: SE Enclosure type: AX Enclosure type: AX with locking rod Width/height/depth: 600 mm
Installation options:	On the tubular door frame On identical punched sections with mounting flanges On the AX interior installation rail for configuration in the enclosure height and width On the perforated door strip in AX stainless steel In the AX enclosure door with locking rod
To fit door width:	600 mm
Packs of:	4 pc(s).

Weight/pack:	1.16 kg
Copper weight (kg per piece):	0
EAN:	4028177924697
Customs tariff number:	73269098
ETIM 6.0:	EC002625
ETIM 5.0:	EC002625
eCl@ss 8.0/8.1:	27189234
eCl@ss 7.0/7.1:	27189234
eCl@ss 6.0/6.1:	23159101
eCl@ss 5.1/5.1.4:	27189250
Product description:	VX Punched section, with mounting flange 14 x 39 mm, for door width: 600 mm