

# Rittal – The System.

Faster – better – everywhere.

► **Punched section with  
mounting flange, 14 x  
39 mm for tubular  
door frame VX, TS,  
SE, AX – VX 8619.700**

Date : Jun 18, 2019

ENCLOSURES

POWER DISTRIBUTION

CLIMATE CONTROL

IT INFRASTRUCTURE

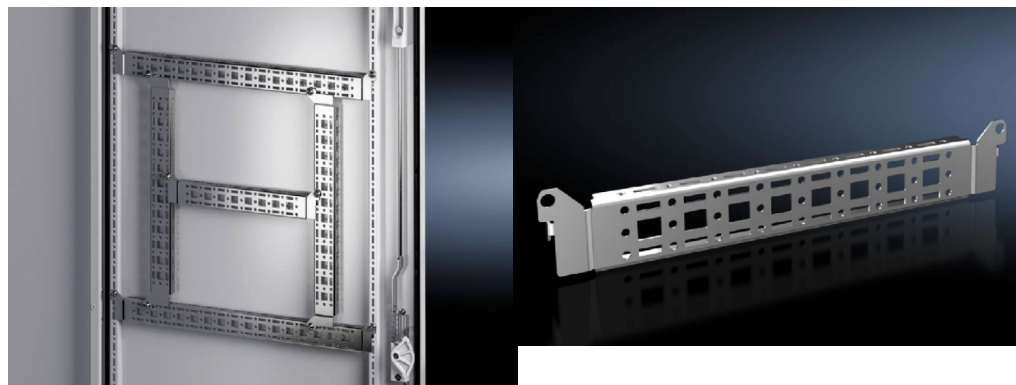
SOFTWARE & SERVICES

FRIEDHELM LOH GROUP



# Punched section with mounting flange, 14 x 39 mm for tubular door frame VX, TS, SE, AX – VX 8619.700

created: 18.06.2019 on [www.rittal.com/com-en](http://www.rittal.com/com-en)



## Product description

<b>Description:</b>	For attaching cable ducts, cable conduit holders, equipment installed on the door, etc.
<b>Material:</b>	Sheet steel
<b>Surface finish:</b>	Zinc-plated
<b>Supply includes:</b>	Assembly parts
<b>Note:</b>	For installing your own components on the punched section with mounting flange, metal screws or self-tapping M5 screws are required

## Product features

<b>To fit:</b>	Enclosure type: VX Enclosure type: TS Enclosure type: SE Enclosure type: AX Enclosure type: AX with locking rod Width/height/depth: 400 mm
<b>Installation options:</b>	On the tubular door frame On identical punched sections with mounting flanges On the AX interior installation rail for configuration in the enclosure height and width
<b>To fit door width:</b>	400 mm
<b>Packs of:</b>	4 pc(s).

<b>Weight/pack:</b>	0.68 kg
<b>Copper weight (kg per piece):</b>	0
<b>EAN:</b>	4028177924659
<b>Customs tariff number:</b>	73269098
<b>ETIM 6.0:</b>	EC002625
<b>ETIM 5.0:</b>	EC002625
<b>eCl@ss 8.0/8.1:</b>	27189234
<b>eCl@ss 7.0/7.1:</b>	27189234
<b>eCl@ss 6.0/6.1:</b>	23159101
<b>eCl@ss 5.1/5.1.4:</b>	27189250
<b>Product description:</b>	VX Punched section, with mounting flange 14 x 39 mm, for door width: 400 mm