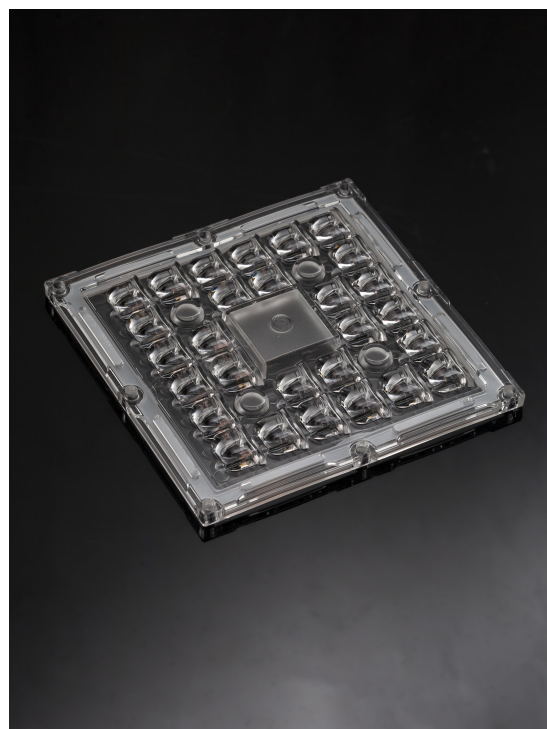


## STRADELLA-IP-28-SCL

Type II/III (long) beam for very wide pole to pole distances. Ideal for pedestrian paths and residential roads. EN13201 P-classes.

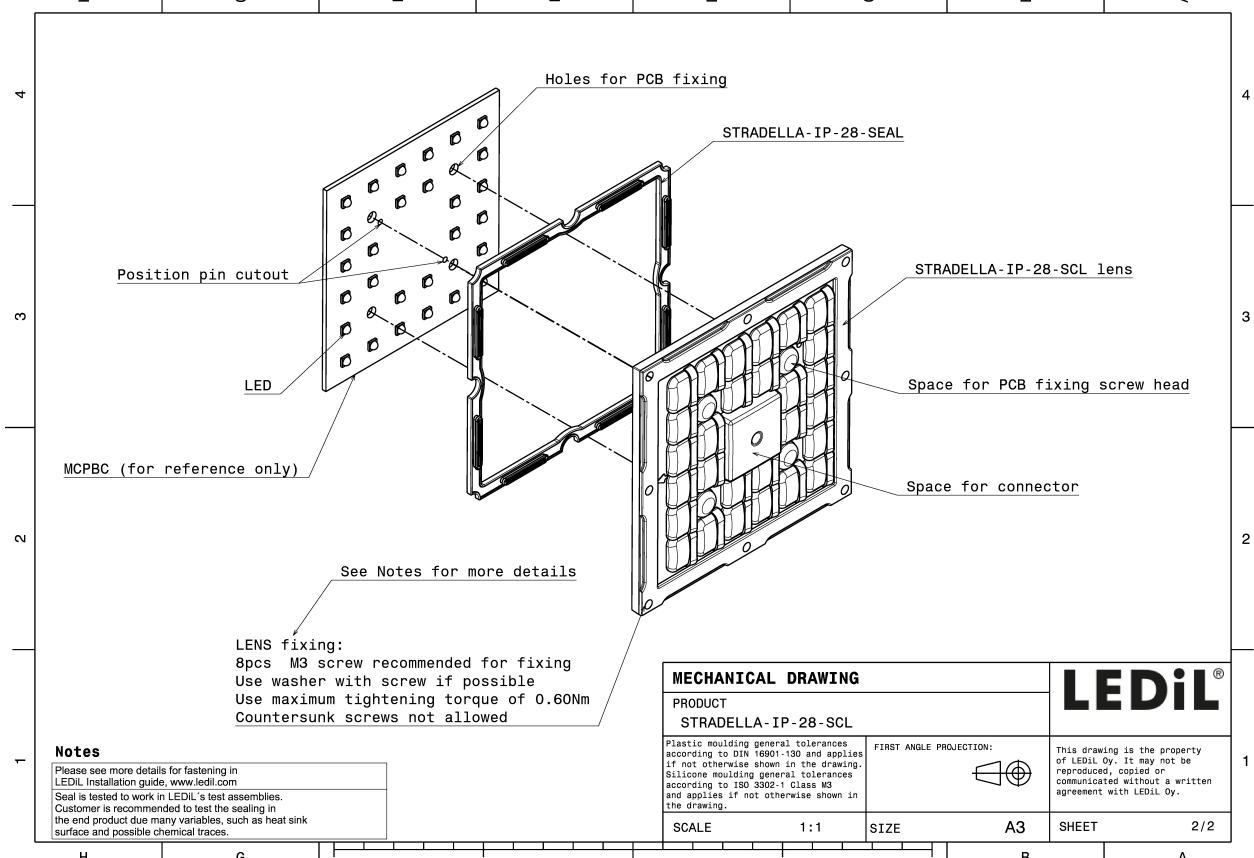
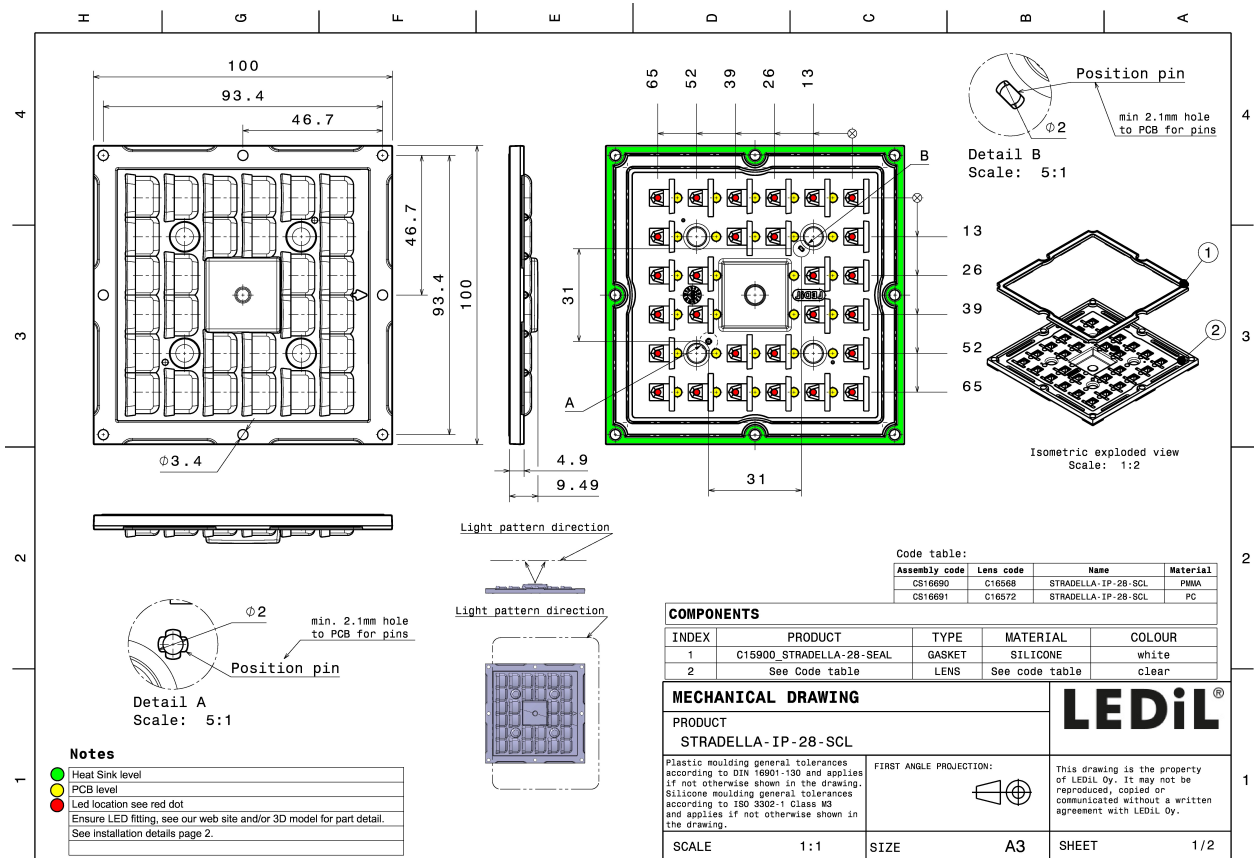
### TECHNICAL SPECIFICATIONS:

Dimensions	100.0 mm
Height	9.5 mm
Fastening	screw
Colour	clear
Box size	476 x 273 x 247 mm
Box weight	6.5 kg
Quantity in Box	156 pcs
ROHS compliant	yes ⓘ



### MATERIAL SPECIFICATIONS:

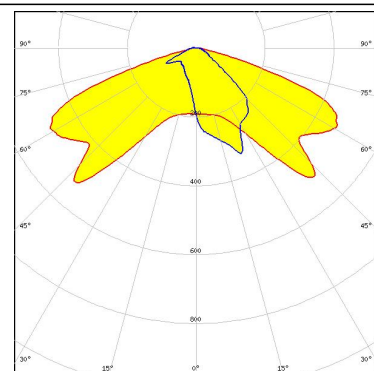
Component	Type	Material	Colour
STRADELLA-IP-28-SCL	Multi-lens		
STRADELLA-28-SEAL	Seal	Silicone	white



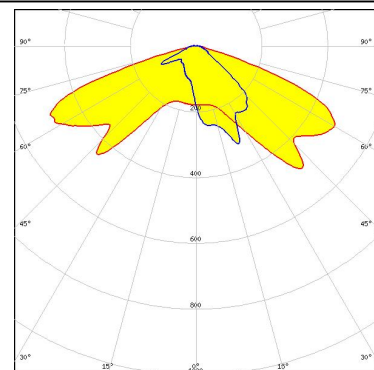
#### PHOTOMETRIC DATA (MEASURED):



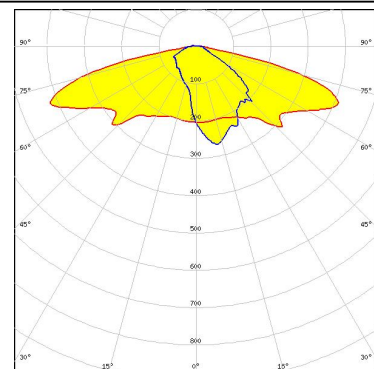
LED HiQLED STR28 CR JE2835 4x7 xxx  
 FWHM Asymmetric  
 Efficiency 93 %  
 Peak intensity 0.750 cd/lm  
 LEDs/each optic 1  
 Light colour White  
 Required components:



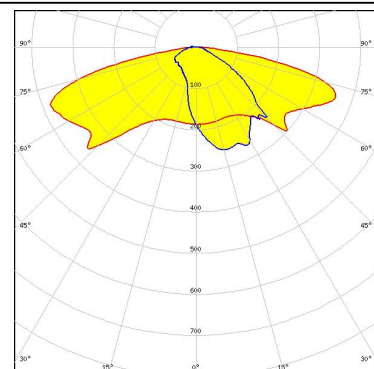
LED HiQLED STR28 CR JÐŠ3030 4x7 xxx  
 FWHM Asymmetric  
 Efficiency 92 %  
 Peak intensity 0.800 cd/lm  
 LEDs/each optic 1  
 Light colour White  
 Required components:



LED QUICK FLUX STR28 XD2x14 xxx G8  
 FWHM Asymmetric  
 Efficiency 93 %  
 Peak intensity 0.650 cd/lm  
 LEDs/each optic 1  
 Light colour White  
 Required components:



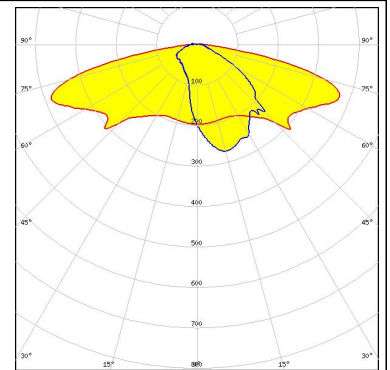
LED QUICK FLUX STR28 XP2x14 xxx G7  
 FWHM Asymmetric  
 Efficiency 93 %  
 Peak intensity 0.520 cd/lm  
 LEDs/each optic 1  
 Light colour White  
 Required components:



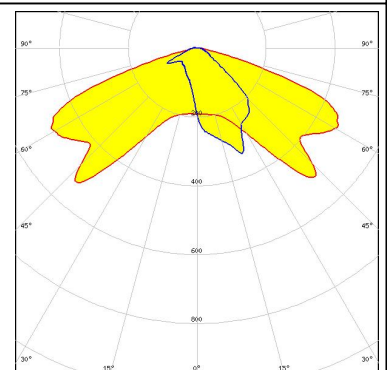
#### PHOTOMETRIC DATA (MEASURED):



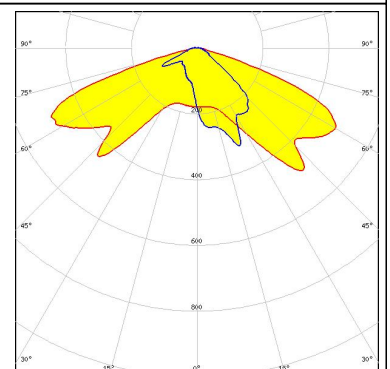
LED QUICK FLUX STR28 XT2x14 xxx G5  
 FWHM Asymmetric  
 Efficiency 94 %  
 Peak intensity 0.570 cd/lm  
 LEDs/each optic 1  
 Light colour White  
 Required components:



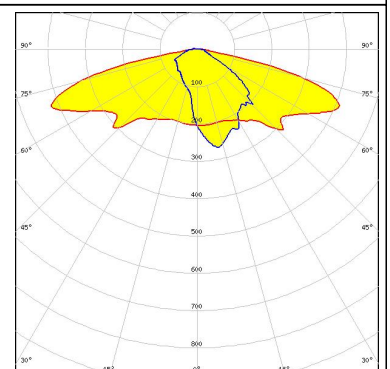
LED J Series 2835  
 FWHM Asymmetric  
 Efficiency 93 %  
 Peak intensity 0.750 cd/lm  
 LEDs/each optic 1  
 Light colour White  
 Required components:



LED J Series 3030  
 FWHM Asymmetric  
 Efficiency 92 %  
 Peak intensity 0.800 cd/lm  
 LEDs/each optic 1  
 Light colour White  
 Required components:



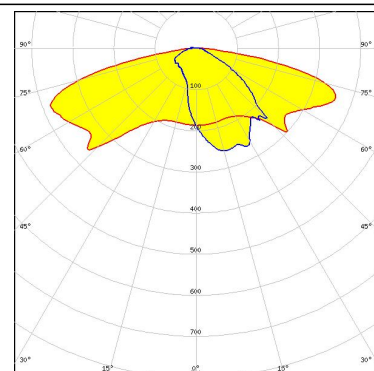
LED XD16  
 FWHM Asymmetric  
 Efficiency 93 %  
 Peak intensity 0.650 cd/lm  
 LEDs/each optic 1  
 Light colour White  
 Required components:



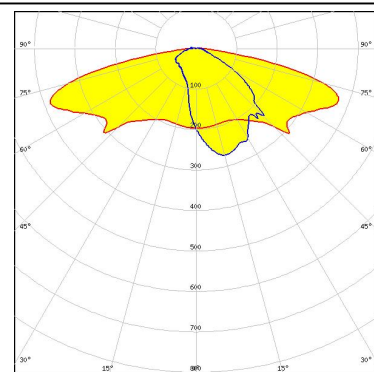
#### PHOTOMETRIC DATA (MEASURED):



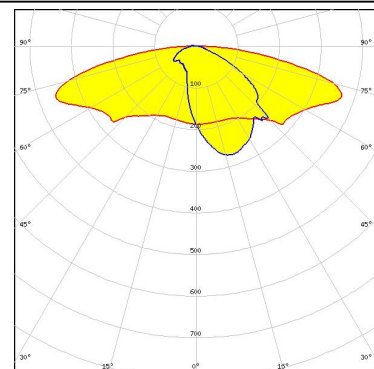
LED XP-G3  
FWHM Asymmetric  
Efficiency 93 %  
Peak intensity 0.520 cd/lm  
LEDs/each optic 1  
Light colour White  
Required components:



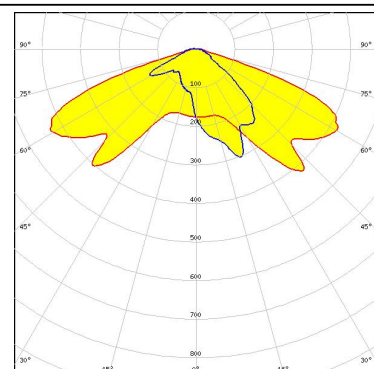
LED XT-E  
FWHM Asymmetric  
Efficiency 94 %  
Peak intensity 0.570 cd/lm  
LEDs/each optic 1  
Light colour White  
Required components:



LED NVSW319B  
FWHM Asymmetric  
Efficiency 94 %  
Peak intensity 0.520 cd/lm  
LEDs/each optic 1  
Light colour White  
Required components:



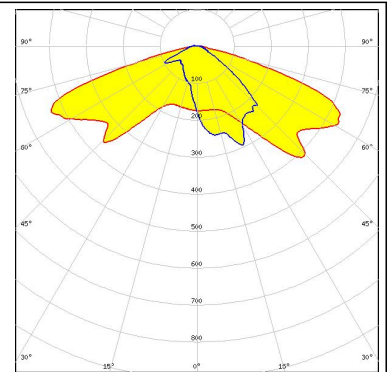
LED HiLOM SC28 (LH181B)  
FWHM Asymmetric  
Efficiency 91 %  
Peak intensity 0.700 cd/lm  
LEDs/each optic 1  
Light colour White  
Required components:



#### PHOTOMETRIC DATA (MEASURED):

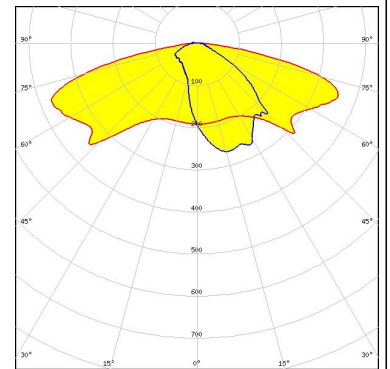
#### SAMSUNG

LED HiLOM SM28 (LM301B)  
 FWHM Asymmetric  
 Efficiency 93 %  
 Peak intensity 0.690 cd/lm  
 LEDs/each optic 1  
 Light colour White  
 Required components:



#### SEIOUL

LED Z5M3  
 FWHM Asymmetric  
 Efficiency 93 %  
 Peak intensity 0.500 cd/lm  
 LEDs/each optic 1  
 Light colour White  
 Required components:

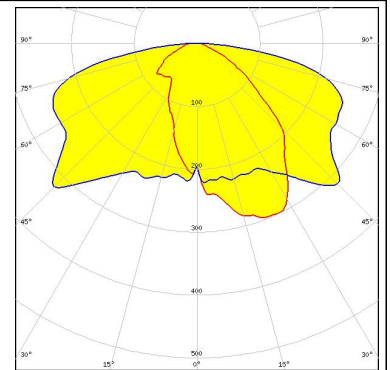




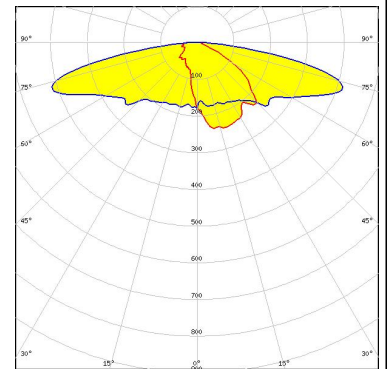
#### PHOTOMETRIC DATA (SIMULATED):



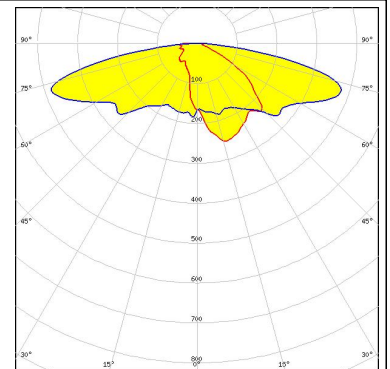
LED LUXEON 5050  
FWHM Asymmetric  
Efficiency 89 %  
Peak intensity 0.370 cd/lm  
LEDs/each optic 1  
Light colour White  
Required components:



LED LUXEON TX  
FWHM Asymmetric  
Efficiency 90 %  
Peak intensity 0.560 cd/lm  
LEDs/each optic 1  
Light colour White  
Required components:

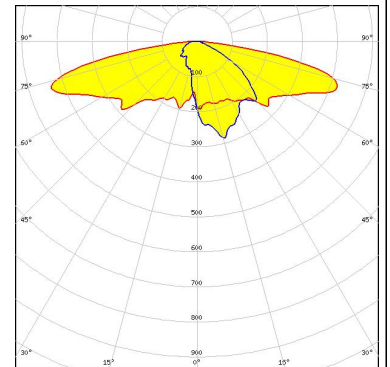


LED LUXEON V2  
FWHM Asymmetric  
Efficiency 90 %  
Peak intensity 0.520 cd/lm  
LEDs/each optic 1  
Light colour White  
Required components:



SEOUL SEMICONDUCTOR

LED Z5M1/Z5M2  
FWHM Asymmetric  
Efficiency 91 %  
Peak intensity 0.570 cd/lm  
LEDs/each optic 1  
Light colour White  
Required components:



#### GENERAL INFORMATION:

NOTE: The typical beam angle will be changed by different color, chip size and chip position tolerance. The typical total beam angle is the full angle measured where the luminous intensity is half of the peak value.

#### MATERIALS:

As part of our continuous research and improvement processes, and to ensure the best possible quality and availability of our products, LEDiL reserves the right to change material grades without notice.

#### PRODUCT DATA USER AGREEMENT AND DISCLAIMER:

The measured data in the provided downloadable LEDiL Product Datasheets and Mechanical 2D-Drawings is rounded and provided as reference for planning. LEDiL Oy's optical specifications have been verified by conducting performance testing of the products in accordance with the company's quality system. The reported data are averaged results of multiple measurements with typical variation. LEDiL Oy reserves the right to without prior notification make changes and improvements to its products.

LEDiL Oy assumes neither warranty, nor guarantee nor any other liability of any kind for the contents and correctness of the provided data. The provided data has been generated with highest diligence but the provided data may in reality not represent the complete possible variation range of all intrinsic parameters. Therefore, in certain cases a deviation from the provided data could occur.

LEDiL Oy reserves the right to undertake technical changes of its products without further notification which could lead to changes in the provided data. LEDiL Oy assumes no liability of any kind for the possible deviation from any provided data or any other damage resulting from the usage of the provided data.

The user agrees to this disclaimer and user agreement with the download or usage of the provided files.

#### LEDiL Oy

Joensuunkatu 13  
FI-24240 SALO  
Finland

#### LEDiL Inc.

228 West Page Street  
Suite D  
Sycamore IL 60178  
USA

#### Local sales and technical support

[www.ledil.com/  
where\\_to\\_buy](http://www.ledil.com/where_to_buy)

#### Shipping locations

Salu, Finland  
Hong Kong, China

#### Distribution Partners

[www.ledil.com/  
where\\_to\\_buy](http://www.ledil.com/where_to_buy)